



# Mixer Tap Margot Gold

Mixer Taps

Code: 8524 009



## DETAILS

Mixer type	Single-lever mixer tap with rotating, collapsible barrel (Up&Down)
Material	Brass
Texture	Chromed
Finish	PVD
Coloring	Gold
Cartridge	With ceramic discs
Mixer hole	ø35 mm
Strengthening plate	ø55mm
Max worktop thickness	70 mm

Rotating angle	360°
----------------	------

---

## FEATURES

COLLAPSIBLE BARREL	Feature that makes it possible to foresee the sink in front of a window, so as to enjoy the natural light.
--------------------	--

---

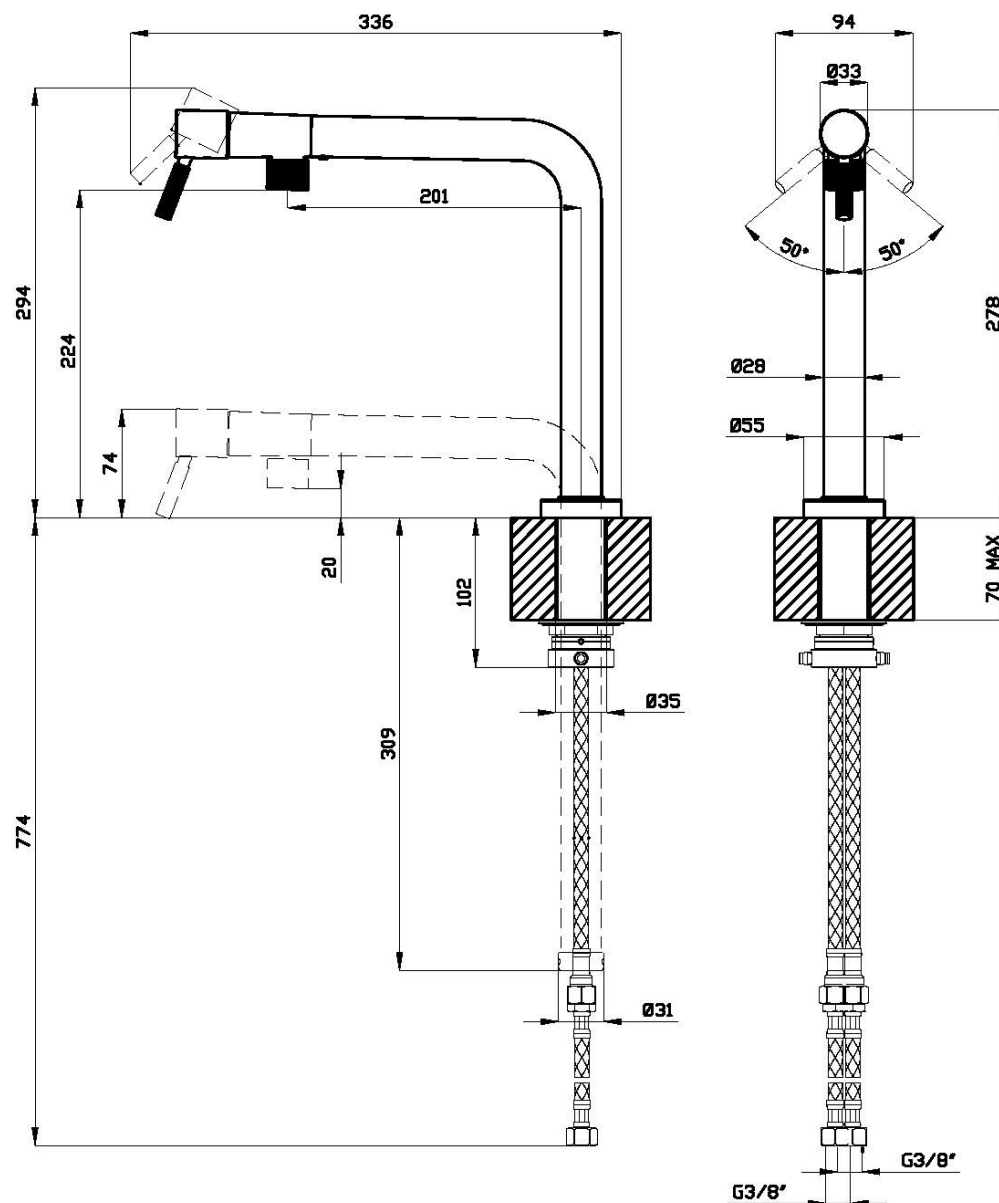
Rotating angle	All the taps have a wide angle of rotation. Some models even permit a full 360° rotation.
----------------	---

---

Strengthening plate	Foster's mixer taps are equipped with the strengthening plate that offers perfect stability on any sink.
---------------------	--

---

## TECHNICAL DATA



## GALLERY

